



“MANCHESTER”



- 2,511 SQ. FT. 2-STORY
- 3 BEDROOMS
- 2 ½ BATHROOMS
- 2 CAR GARAGE W/ STORAGE
& 10'-0" WIDE GARAGE DOORS
- PERFECT FOR CORNER LOTS



****Renderings may show optional features****

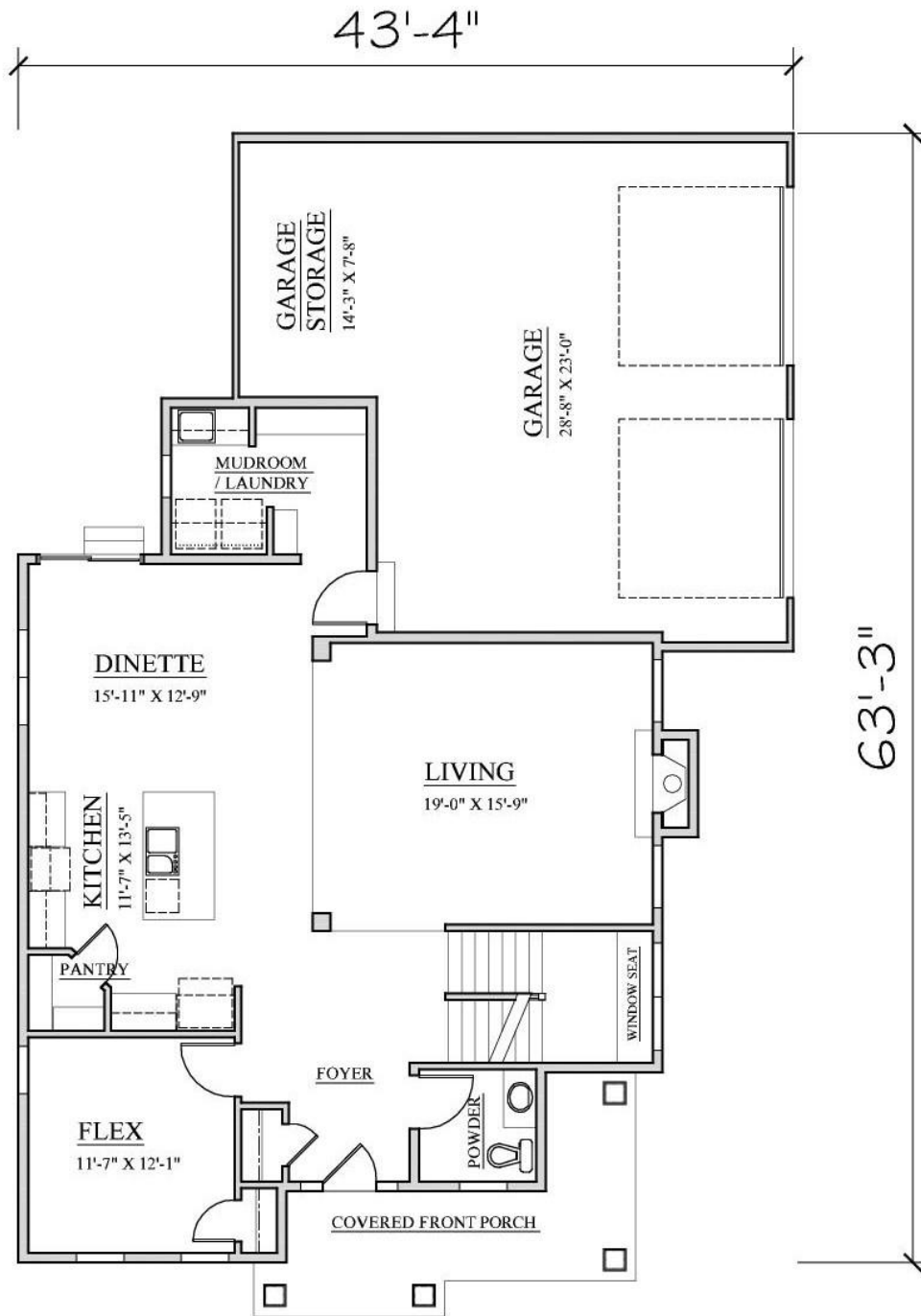
Builder reserves the right to change specifications for purpose of improving product. It is unlawful for anyone to use or copy these floorplans without the expressed written permission of Kaerek Homes, Inc.

© Copyright Kaerek Homes, Inc. ALL RIGHTS RESERVED.





“MANCHESTER”



1,337 Sq. Ft. First Floor 777 Sq. Ft. Garage

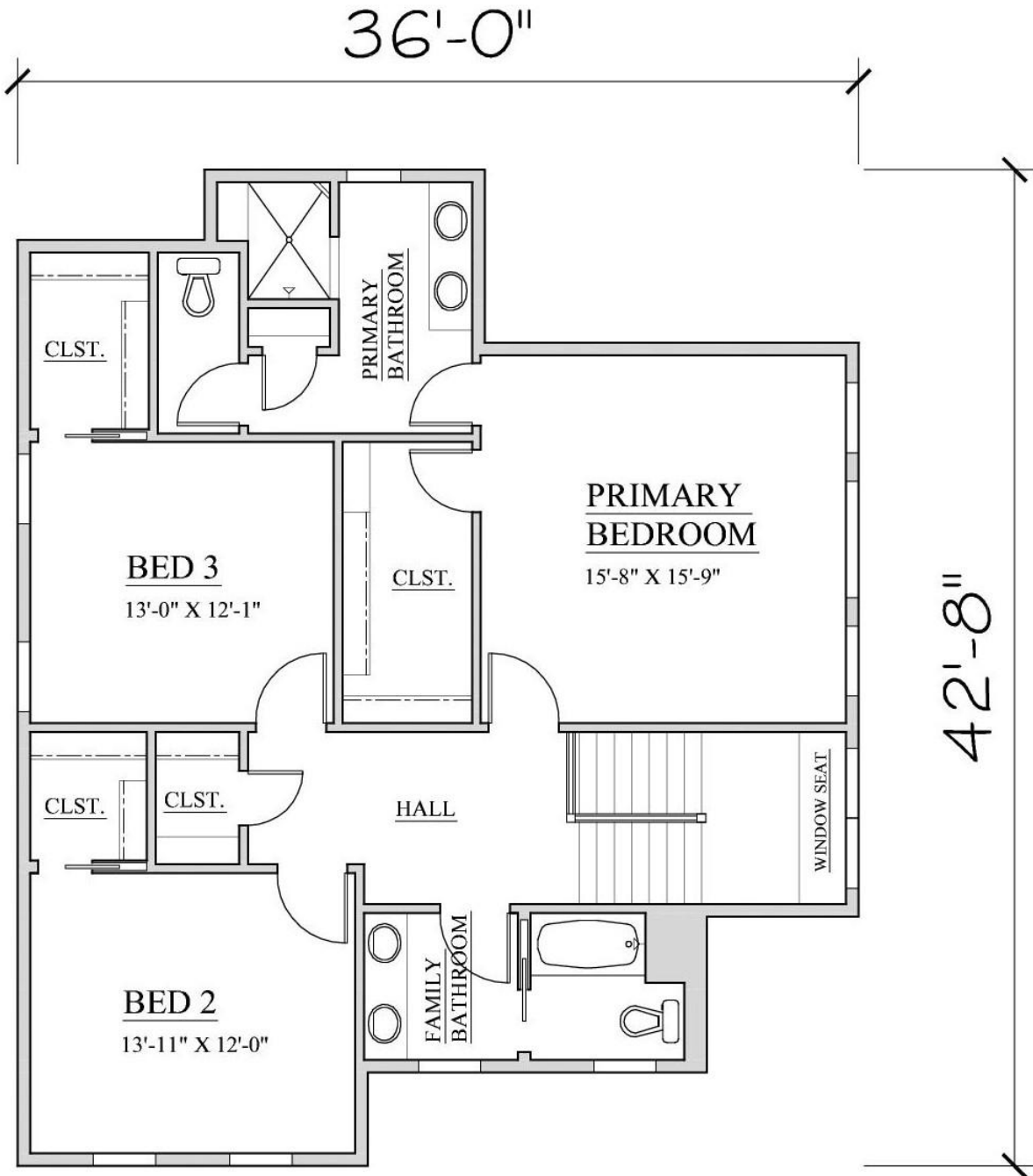
Builder reserves the right to change specifications for purpose of improving product. It is unlawful for anyone to use or copy these floorplans without the expressed written permission of Kaerek Homes, Inc.

© Copyright Kaerek Homes, Inc. ALL RIGHTS RESERVED.





“MANCHESTER”



1,174 Sq. Ft. Second Floor

Builder reserves the right to change specifications for purpose of improving product. It is unlawful for anyone to use or copy these floorplans without the expressed written permission of Kaerek Homes, Inc.

© Copyright Kaerek Homes, Inc. ALL RIGHTS RESERVED.

